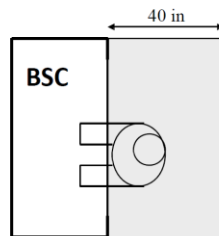


Biosafety Cabinet (BSC) - מנדפים ביולוגיים

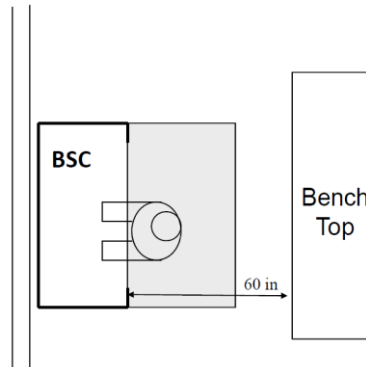
Placement Requirements for new Buildings and Renovations

Workspace Specifications



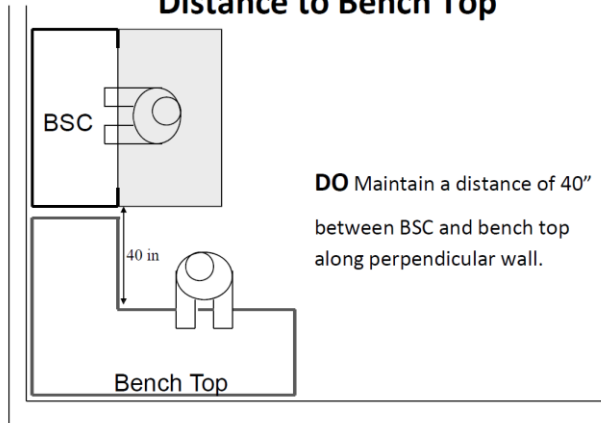
DO Maintain an undisturbed space of 40" around BSC.

Distance to Bench Top

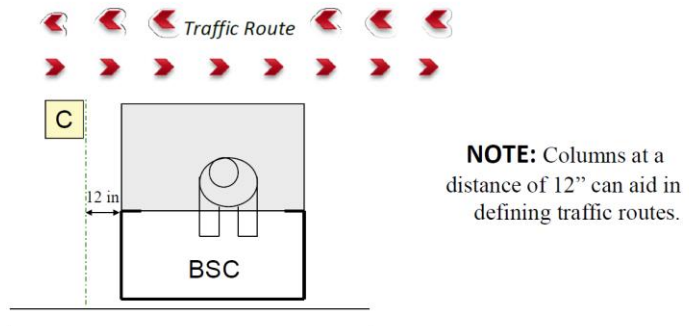


DO Place BSCs at least 60" to opposing bench tops or areas with occasional traffic.

Distance to Bench Top

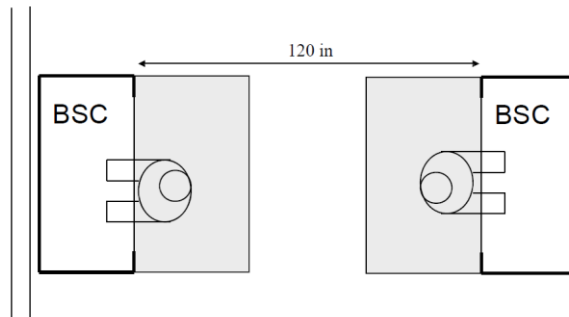


Distance to Columns



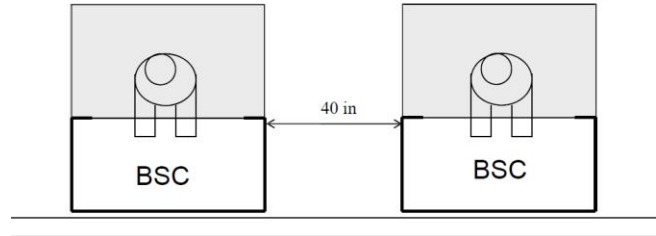
BSC Placement Along Opposing Walls

DO Maintain a distance of 120" between opposing BSCs.



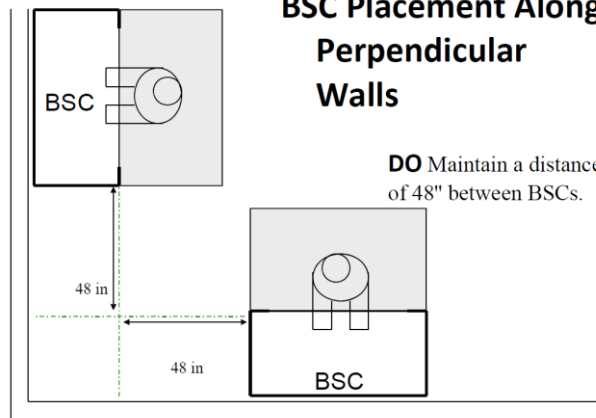
BSC Placement Along Same Wall

DO Maintain a distance of 40" between BSCs along same wall.



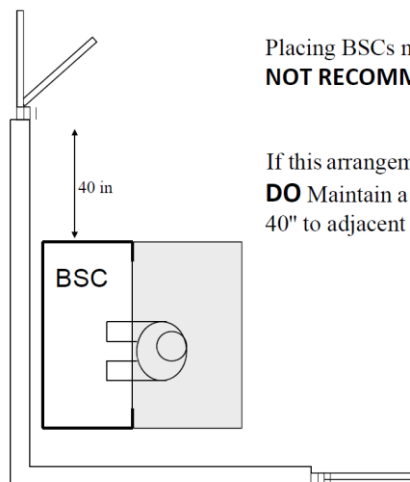
BSC Placement Along Perpendicular Walls

DO Maintain a distance of 48" between BSCs.



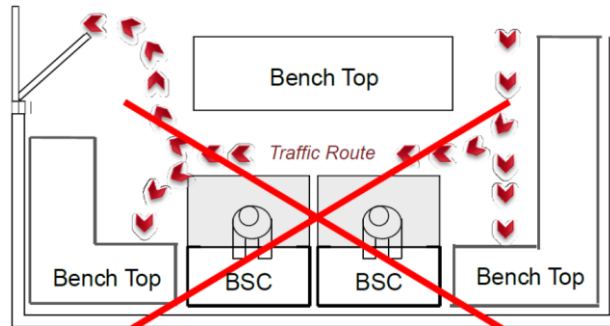
Placing BSCs near one entryways is **NOT RECOMMENDED.**

If this arrangement is absolutely necessary:
DO Maintain a distance of 40" to adjacent doorways



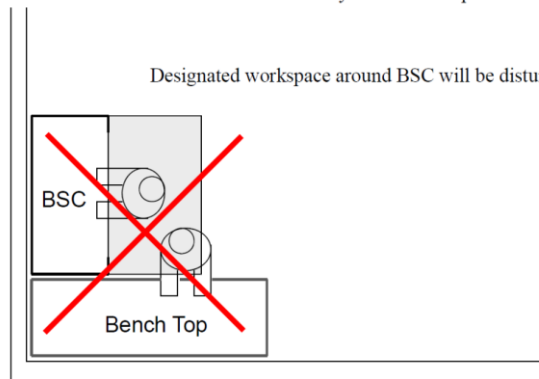
DO NOT Crowd together bench tops and BSCs.

Too much traffic produces dangerous disturbances to BSC airflow.



DO NOT Place BSCs directly near bench tops.

Designated workspace around BSC will be disturbed.



Biological Safety Cabinet (BSC) performance can be impacted by airflow patterns in the room, especially at the face of the cabinet. To ensure this does not happen, follow the guidelines listed below:

1. Air supply diffusers or exhaust vents **should not** be placed directly over or in front of BSCs.
2. BSCs **should** be located out of the laboratory personnel traffic pattern. Preferably they are placed at the end of an aisle.
3. BSCs **should not** be placed near an entryway. If this cannot be avoided they should be placed at least 60" from behind the doorway or 40" from an adjacent door.